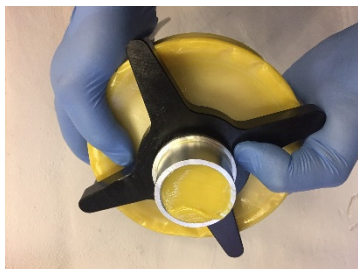


Pump Priming

1. AIR IN SYSTEM

1.1. GENERAL CONSIDERATIONS

- 1.1.1. Before assembly of the cartridge – always push the grease forward to the cartridge opening to prevent air in the pump.



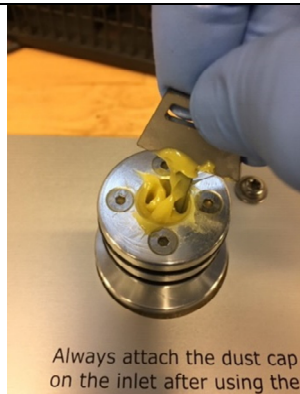
- 1.1.2. Frequently check O-rings.

1.2. FIRST AID AT AIR IN SYSTEM

- 1.2.1. Provide Pump priming Oil *art.no. 50100120* and Key for Priming *art. no. 30400043*.



- 1.2.2. Stop the pump by pressing “STOP” at the touch panel at the Hove Easy Grease pump or by setting the selector switch to the “OFF” position at the Hove Refiller
- 1.2.3. Select the flush position and set the speed adjustment knob to “0”
- 1.2.4. Disassemble the cartridge
- 1.2.5. Make a channel in the grease as deep as the Key allows. (it is very important that the pump is NOT running during this procedure!)



- 1.2.6. Fill the prepared channel with Priming Oil. Refill until no air bubbles is visible.



- 1.2.7. Attach the cartridge
- 1.2.8. Flush the system by starting at 50% speed and slowly increasing the speed to 100%.



- 1.2.9. Continue flushing until no more air bubbles appear and the grease is homogeneous (free of the added oil).
- 1.2.10. Repeat the steps above from 5.2.6. max. 3 times.
- 1.2.11. If the problem is still not solved, replace the cartridge and repeat the procedure again max. 3 times.

1.2.12. Otherwise contact Hove A/S by sending an email to: repairs@hove-as.dk and Cc: hove@hove-as.dk